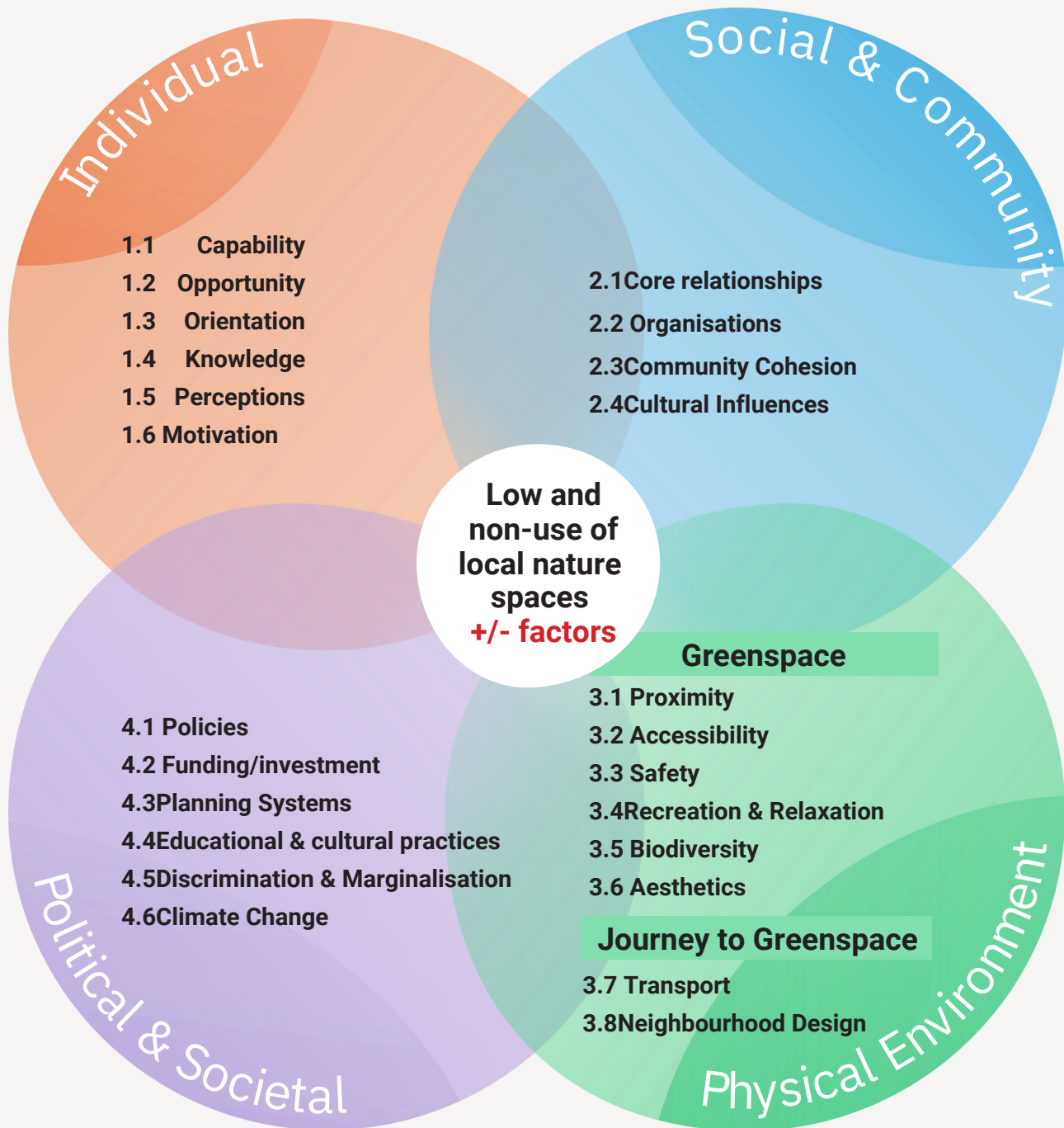


Green Gap Framework: Exploring drivers & influences on low and non-use of local nature spaces

The Green Gap Framework presents complex, multi-layered influences that affect use of nature spaces. Four domains show a range of factors that can encourage or discourage engagement and/or connections with nature. The focus here is on low and non-use of nature spaces, and on local settings and urban contexts.

Green Gap Framework



+/-: Each factor can encourage or discourage engagement and/or connections.
Focus: low and non-use of nature spaces, local settings, urban contexts.
See Descriptors table on pages 4-5 for an outline of domains and individual factors.