

Centre for Archaeological Fieldwork

School of Geography, Archaeology and Palaeoecology, QUB

CAF Data Structure Report: No. 111

Excavations at Dunluce Castle, Co. Antrim

Andrew Gault and Grace McAlister

VOLUME 2: FIGURES AND PLATES

ANT 002:003 & ANT 002:008



On behalf of



PLATES



Plate 1: Trench 1, post-excavation showing cobbled surface 103, looking south



Plate 2: Trench 2, post-excavation showing cobbled surface 203 looking west



Plate 3: Trench 4, post-excitation showing cobbled surface 402 looking east



Plate 4: Trench 5, prior to removal of cobbles, looking south-east



Plate 5: Trench 5, west facing section through 501



Plate 6: Trench 29, post-excavation, looking north



Plate 7: Trench 29, post-excitation showing west facing section



Plate 8: Trench 26a, surface of 2604, looking north



Plate 9: Trench 26a, surface of C.2804, in plan



Plate 10: Trench 26a, post-excavation of 2606, looking east



Plate 11: Trench 26a, south facing section



Plate 12: Trench 26b, following removal of 2601, looking west



Plate 13: Trench 26b, showing northern part of wall 2608, looking west



Plate 14: Trench 26b, showing eastern part of wall 2608, looking south



Plate 15: Trench 26b, post-excitation, looking north-east



Plate 16: Trench 26b, post-excitation showing surface 2615, looking north-east



Plate 17: Trench 26b - Scottish Grey Ware



Plate 18: Trench 7, showing surface of 714 and cut 713, looking north



Plate 19: Trench 7, pre-excavation of 712, looking south



Plate 20: Trench 7, mid-excavation of 712, looking north



Plate 21: Trench 7, mid-excavation of 714, looking north



Plate 22: Trench 7, post-excavation, looking south



Plate 23: Trench 7, post-excavation, looking north



Plate 24: Trench 7, post-excavation, northern face of wall 703, looking south



Plate 25: Trench 7 (714), Medieval Ulster Coarse Pottery (photo provided by Tony Corey)



Plate 26: Trench 8, showing 802, looking south



Plate 27: Trench 8, half section through 802, looking south



Plate 28: Trench 8, half section following removal of 804, facing north



Plate 29: Trench 8, following removal of 802, looking south



Plate 30: Example of tiles found in Area G



Plate 31 Trench 9a, western end of trench, looking east



Plate 32 Plate 14 Trench 9a, drain feature 932, looking west



Plate 33: Trench 9a, west facing elevation of 928



Plate 34: Trench 9a, showing two elevated features, 928 and 932 (*photo provided by Tony Corey*)



Plate 35: Trench 9b, orange brown charcoal deposit, looking south



Plate 36: Trench 9b, showing C.916, C.917 and south of wall C.905, looking north



Plate 37: Trench 9b, surface of C.917 south of the wall, looking east



Plate 38: Trench 9b, south facing elevation of 905, looking north



Plate 39: Trench 9b, north facing elevation of 903, looking south



Plate 40: Trenches 9a and 9b, aerial shot, looking south

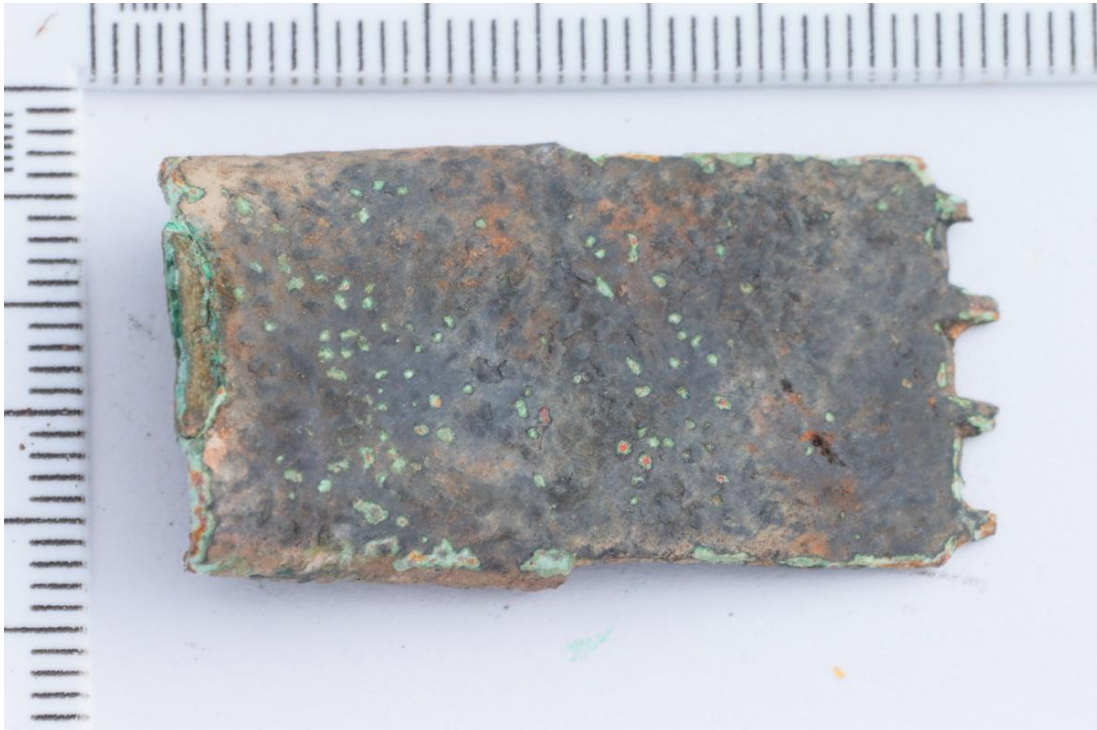


Plate 41: Trench 9b, copper alloy strap fitting (*photo provided by Tony Corey*)

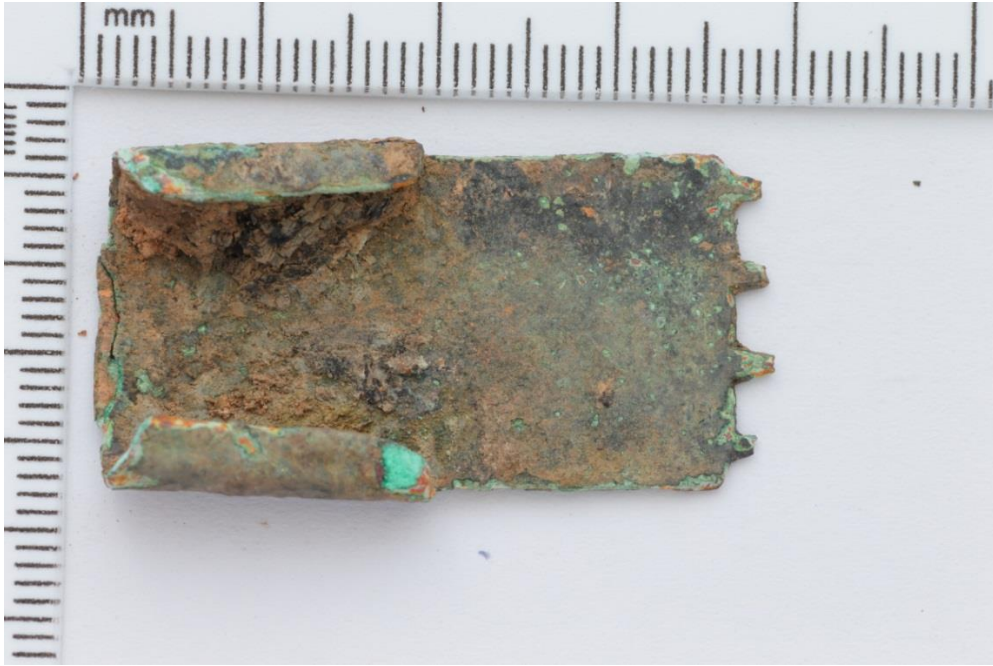


Plate 42: Trench 9b, copper alloy strap fitting - reverse (*photo provided by Tony Corey*)



Plate 43: Trench 9b, Mary I silver groat (*photo provided by Tony Corey*)



Plate 44: Trench 10, mid-excavation close up of box trench, looking south



Plate 45: Trench 10, west facing section (southern part)



Plate 46: Trench 10, east facing section, southern part



Plate 47: Trench 10, west facing section, southern part



Plate 48: Trench 11, before extension, looking west



Plate 49: Trench 11, post-excavation of extension, looking east



Plate 50: Trench 11, post-excitation of extension, looking west



Plate 51: Trench 11, half musket ball (*photo provided by Tony Corey*)



Plate 52: Trench 11, Elizabeth I silver coin (*photo provided by Tony Corey*)